

Collaborative Planning for Apalachicola Restoration in High Resolution

Colin Stief

Senior Application Designer, Chesapeake Conservancy



Chesapeake Bay Program
A Watershed Partnership





Data

High-resolution

Large extent

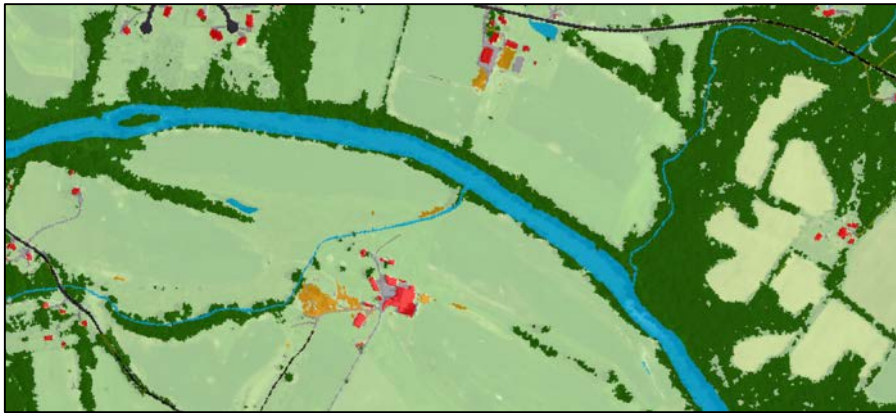


Web-based tools

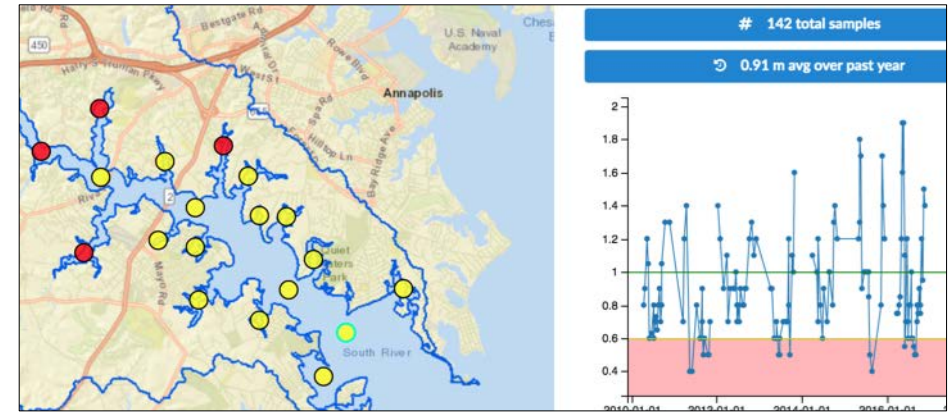
Visualization

Project management

 Data



 Web-based tools



0002RAD74.DORC

- ACCOUNTS: 1007196717
- VISIT DATE: 2017/05/22
- VISIT TYPE: Ground
- TIME: From 12:00 pm to 1:00 pm
- ORGANIZATION: Chesapeake Conservancy
- MONITOR: Colin (Staff)

Prepare map | Open it | Print summary report | Zip photos | Download

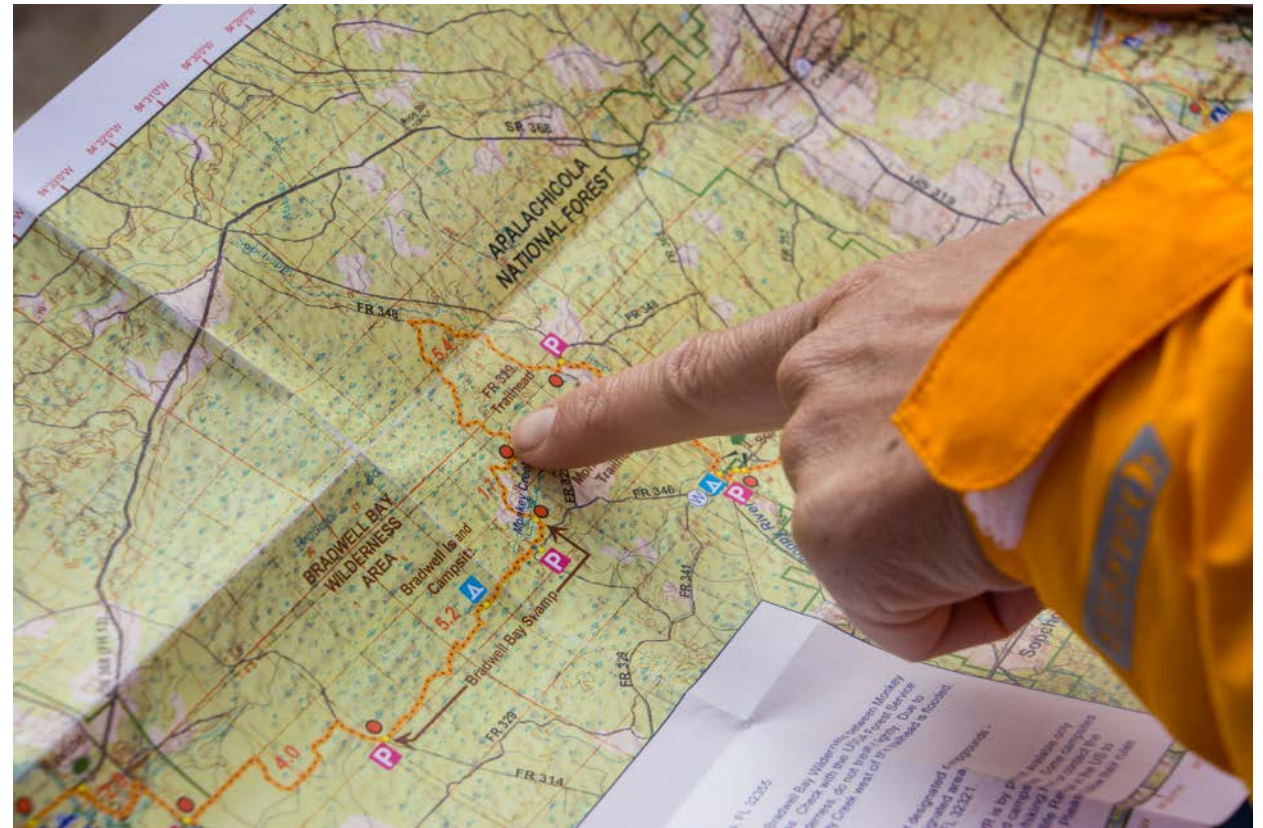


cser

CENTER *for*
SPATIAL ECOLOGY
and **RESTORATION**



FLORIDA A&M UNIVERSITY
FLORIDA AGRICULTURAL AND MECHANICAL UNIVERSITY





Ongoing projects

1. Culvert survey analysis
2. Prescribed burn extent identification
3. Evapotranspiration analysis

Culvert survey analysis

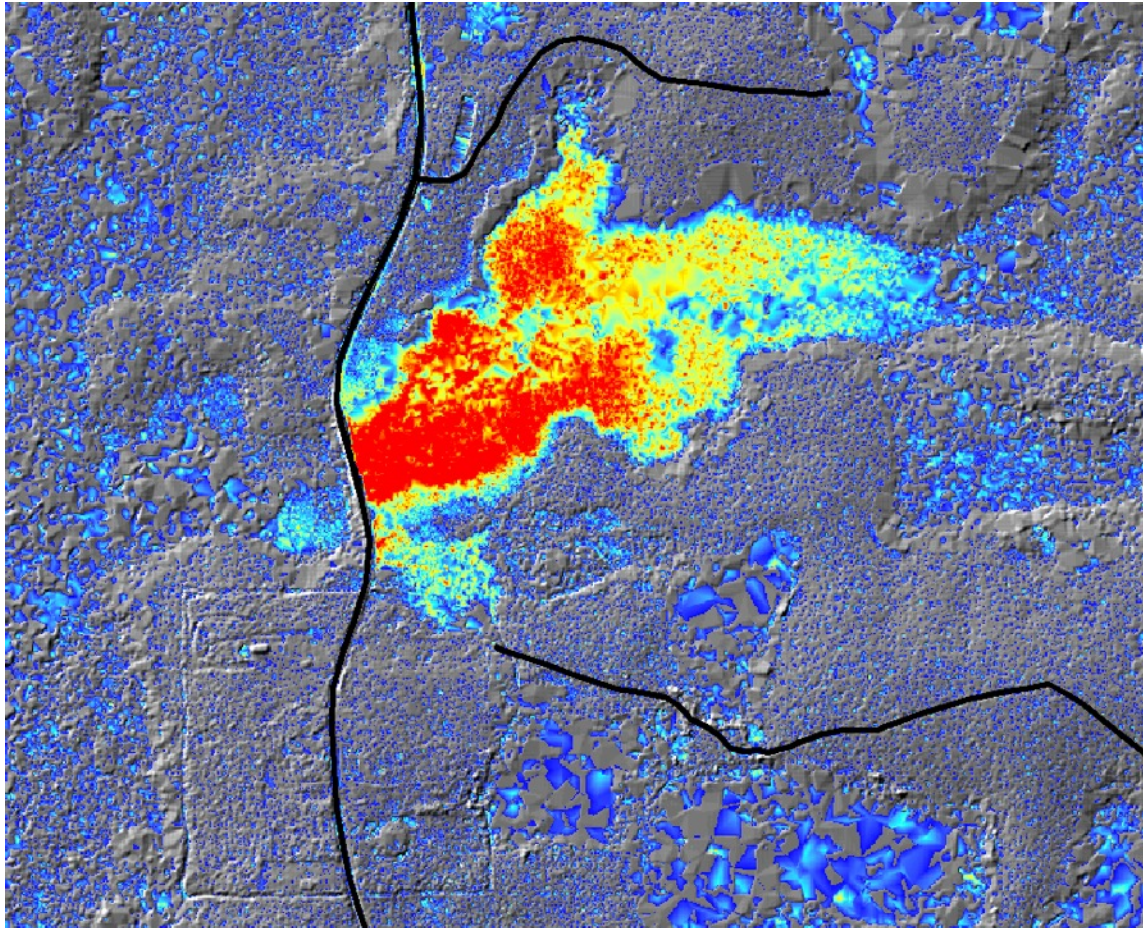


2014: Developed test methods

2017-18: Inventory drainage structures

Attributes: type, shape, materials, dimensions, condition, flow, photos

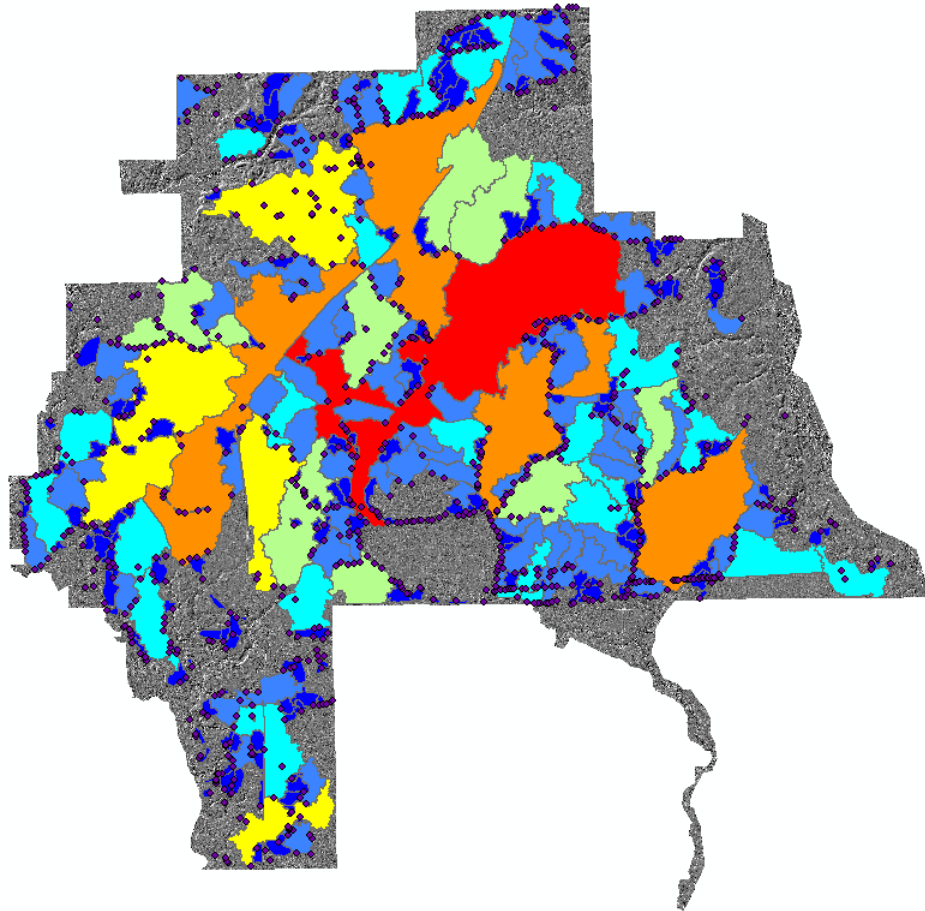
Culvert survey analysis



Drainage areas:
hydro-corrected digital
elevation model

*Where are depressions adjacent
to structures or roads?*

Culvert survey analysis



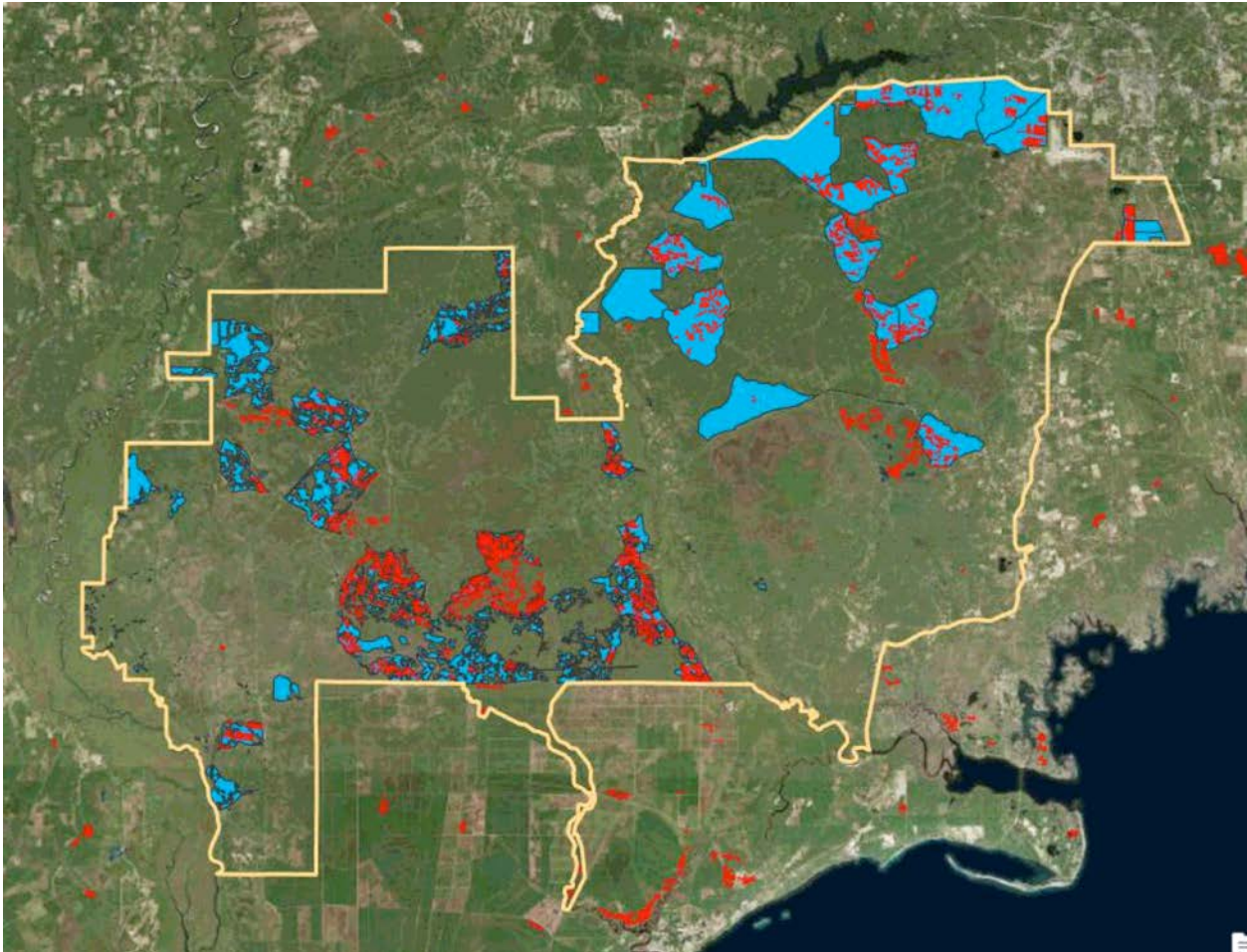
Prioritization:

1. Existing culverts
2. Construction opportunities

Goals:

Aquatic organism passage
Improved drainage

Prescribed burn analysis



Perimeter/extent:
derived from satellite imagery

Prescribed burn analysis



Web-based mapping application

Visual catalog
Historic burn extents
Supplementary data

Evapotranspiration (ET) analysis



EEFlux

Google Earth
Engine tool

Relationship
between ET and
ground cover

Contact Information

Colin Stief

cstief@chesapeakeconservancy.org

www.chesapeakeconservancy.org